

Controls

radio remote control

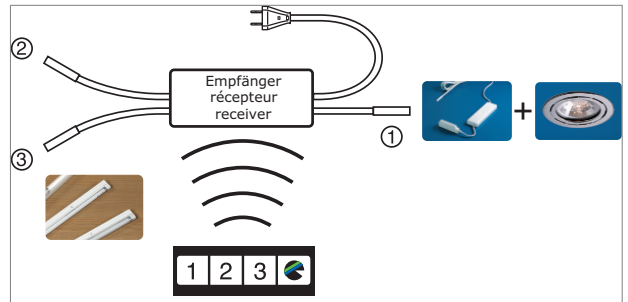
Radio remote control, three-channel Receiver 230 volt



The remote control serves for switching furniture lamps and furniture lamp operating equipment. Signals are radioed on a frequency according to a European harmonized standard. The system is especially appropriate for retrofit installation and wherever it was not possible to allow for a certain place for a lamp switch in advance. Owing to the battery-powered operation of the transmitter, it can be used in areas where no mains-powered devices are allowed to be installed for safety reasons (e.g. bathrooms).

- Receiver with cable 3000 mm, three outgoing channels
- For all devices provided with a Euro flat plug (protection classification 2) and a maximum power uptake less than the stated value of "180 W" per channel
- A maximum number of 32 transmitters can be logged onto every receiver
- In-house service area up to 20m
- Mounting and operating instructions provided

	power	outlets
76.26108.11	180 W per channel	3x 300 mm and Round HV plug



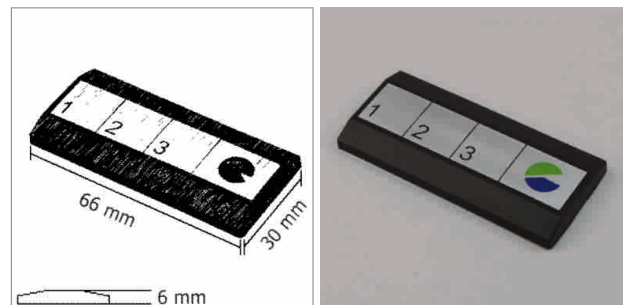
- i** • It is essential to mount the receiver at an accessible place.
- Avoid installing receiver and/or transmitter on large metallic areas and never place the receiver on the floor.
- Keep transmitter and/or receiver from being directly insulated (max. 25 °C).
- Prior to starting up the radio remote control, read and exactly follow its installation instructions.

Radio remote control, three-channel Transmitter 3 volt



- For three-channel receiver 76.26108.11
- Battery 3 volt Maxell CR2032
- 32 transmitters maximum can be logged onto every receiver
- Transmission channels can be individually adjusted
- Installation and operating instructions are provided with equipment

	finish	battery
76.26109.00	black / alu effect	3 V Maxell CR2032



- i** Technical information and legend for icons (page A-1.79).